



COUNTY OF BRUCE
MUNICIPAL CLASS ENVIRONMENTAL ASSESSMENT
SCHEDULE "C"
REPLACEMENT OF MCCURDY BRIDGE

NOTICE OF STUDY COMMENCEMENT

THE PROJECT:

In April 2013 the County of Bruce completed a Bridge Infrastructure Master Plan which identified outcomes for a group of county-owned bridges spanning the Teeswater and Saugeen Rivers in central Bruce County. One of the structures included in the Master Plan was the McCurdy Bridge, which spans the Saugeen River on the Brant Elderslie Road approximately 2 kms east of County Road 3 (as shown on the accompanying key plan). The McCurdy Bridge is a single span, steel through truss bridge constructed circa 1913.

As part of the preferred implementation strategy identified in conjunction with the Master Plan, the McCurdy Bridge has been recommended for replacement. This recommendation was reached following the completion of an extensive analysis process and multiple opportunities for public and agency input and review. Additional Environmental Assessment review is required prior to implementation of this component of the Master Plan recommendations. It is anticipated that the additional Environmental Assessment review will be carried out over the course of the next year, with construction of a new bridge crossing occurring during the 2015 construction season.

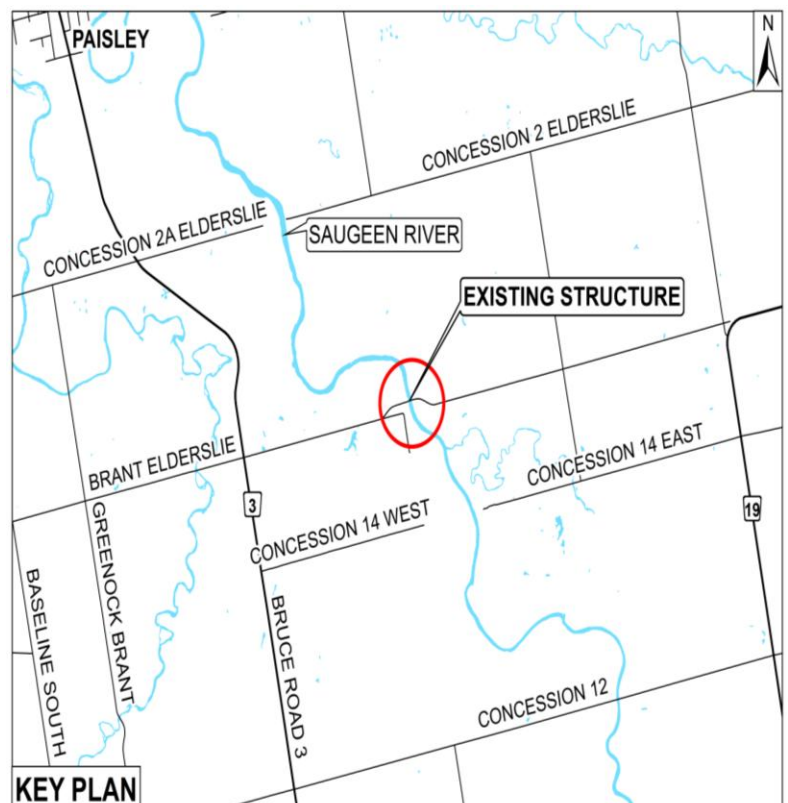
THE ENVIRONMENTAL ASSESSMENT PROCESS:

The planning for this project is following the planning process established for Schedule "C" activities as described in the Municipal Engineers Association's Municipal Class Environmental Assessment (EA) document (approved October 2000, as amended in 2007 and 2011). The purpose of the Environmental Assessment process is to identify any potential environmental impacts associated with the project and to plan for appropriate mitigation of any impacts. The process includes additional consultation with the public, stakeholders and government review agencies.

PUBLIC INVOLVEMENT:

Public input and comments are invited for incorporation into the planning and design of this project and will be received until **November 1, 2013** at the address listed below. Any comments collected in conjunction with the study, will be maintained on file for use during the project and may be included in project documentation. With the exception of personal information, all comments will become part of the public record.

For further information on this project, or to review the Municipal Class EA process, please contact the project engineers: B.M. Ross and Associates: 62 North Street, Goderich, Ontario, N7A 2T4. Telephone (Toll Free): (888) 524-2641. Fax: (519) 524-4403. Kelly Vader, Environmental Planner (e-mail: kvader@bmross.net).



Brian Knox, P. Eng., County Engineer

This Notice Issued October 1, 2013.