



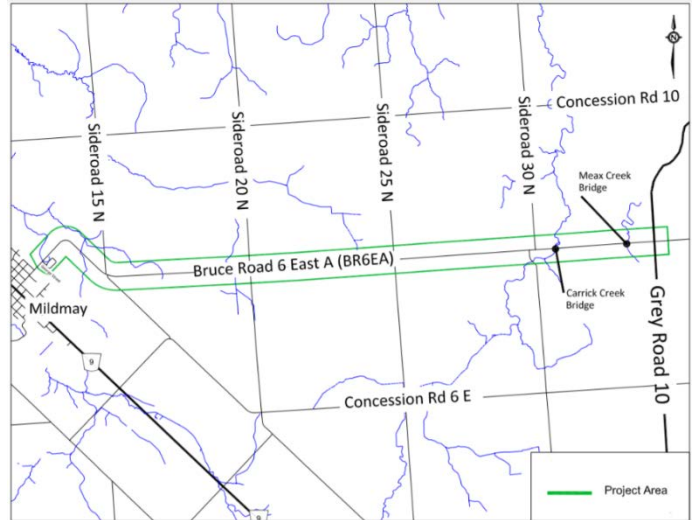
# Notice of Study Commencement

## Bruce Road 6 East A Rehabilitation

### Environmental Assessment Study and Detail Design

#### INTRODUCTION

The County of Bruce has retained BT Engineering to undertake an Environmental Assessment (EA) Study and Detail Design for the rehabilitation of Bruce Road 6 East A (BR6EA). The project area begins at George Street in Mildmay to Grey Road 10. The study will evaluate the roadway alignment and will recommend a preferred plan to address the traffic needs within the project area. Improvements to BR6EA are required to address safety concerns associated with the vertical and horizontal curves and to rehabilitate the existing pavement structure, culverts, and bridges.



#### STUDY PROCESS

This Study will be conducted as a Municipal Schedule A+ Class Environmental Assessment, meeting the requirements of the Municipal Class Environmental Assessment (2015). The project will determine the design and staging for the road rehabilitation, and will consider the effects on the natural, social, and cultural environments. If there are greater impacts to the natural, social, or cultural environment than initially anticipated, the project will be elevated to a Schedule B Class Environmental Assessment with public notification provided.

#### PUBLIC CONSULTATION

There is opportunity at any time during the Class EA process for interested persons to provide comments. Early identification of individual and group concerns greatly aids in addressing these concerns. All information will be collected in accordance with the *Freedom of Information and Protection of Privacy Act* (2009). With the exception of personal information, all comments will become part of the public record. Persons will be advised of future communication opportunities by newspaper public notices, notices on the County website and through direct mail outs via Canada Post or email distribution.

For more information, or if you would like to receive information directly through Canada Post or by email please contact either:

**Steve Taylor, P.Eng.**  
**EA Project Manager**  
**BT Engineering Inc.**  
509 Talbot Street  
London, ON N6A 2S5  
Tel: 519-672-2222  
Email: [stevenj.taylor@bteng.ca](mailto:stevenj.taylor@bteng.ca)

**Jim Donohoe**  
**Engineering Manager**  
**Bruce County**  
30 Park Street  
Walkerton, ON N0G 2V0  
Tel: 519-881-2400  
Email: [JDonohoe@brucecounty.on.ca](mailto:JDonohoe@brucecounty.on.ca)