

BRUCE COUNTY
TRANSPORTATION & ENVIRONMENTAL SERVICES DEPARTMENT

2023-2024 Winter Maintenance Book



Table Of Contents

Preamble.....3

Contacting The Department.....4

Winter Maintenance Staffing And Patrolling.....5

Road Report Updates.....6

Level Of Service Policy.....7

Ceasing Winter Maintenance Operations.....12

Closing Roads Due To Inclement Winter Conditions.....13

Operator’s Hours During Winter Maintenance.....15

Winter Maintenance Agreements.....16

Notice Of Violation.....17

Notice Of Parking Violation Warning.....18

Snow Plowing Policy In Urban Areas.....20

Snow Plowing Policy At Intersections.....21

Ad Hoc Service Providers.....22



Preamble

The Bruce County Transportation and Environmental Services Department is responsible for the winter maintenance of the Bruce County Road network. This book provides the framework to meet the County's objectives for a safe and efficient delivery of winter road maintenance operations.

The policies and procedures contained within this book are intended to be flexible to allow the Operations team to respond to changing conditions, new technologies, and other challenges while ensuring that roadway safety is not compromised.

This plan is communicated for awareness, to the County's senior management team and Council, prior to the commencement of the winter season.



The County provides for a level of service in excess of the Minimum Maintenance Standards set out in O. Reg. 239/02 in regards to response times, and snow and ice accumulation.

The work is carried out through the four (4) patrol areas and includes the use of third-party Contractors where appropriate. The department does not provide for 24-hour service, and generally does not continue maintenance operations through 9:00 PM and 4:00 AM unless it is deemed necessary or during unusual circumstances. The exception to this would be during emergency road closures and assistance with emergency services. Under normal circumstances the intended goal of the program is to have roads open and cleared to the Minimum Maintenance Standards before the start of the heavier commuting traffic in the mornings and evenings.

Communication of road conditions and closures is an important part of the program and is carried out through the use of social media platforms, the County website and by listening through 1-866-266-7569. Work is underway to pilot a consolidated road conditions, closures and weather radar mapping system for the winter of 2023/24 utilizing Municipal 511 and Environment Canada's data to reach a broader audience. Significant Weather Events are an example of the importance of communication and identifying when weather conditions could delay the County's winter operations.

The objective of the winter program is to provide safe road conditions insofar as practical within the level of services and financial resources approved by Council.

Yours truly,

A handwritten signature in blue ink, appearing to read "Adam Stanley". The signature is stylized with a large, sweeping "A" and "S".

Adam Stanley
Director, Transportation and Environmental Services

Contacting The Department

General Information

The general public can contact the Transportation and Environmental Services Department to inquire about or provide information regarding winter maintenance at:

- 519-881-1291
- transportationinfo@brucecounty.on.ca

Road Conditions

For winter conditions on Bruce County authority roads, the public can:

- visit www.brucecounty.on.ca/road-conditions
- call the Winter Road Conditions Hotline at 1-866-266-7569

Emergencies

For emergencies, the public should call 911 or contact their local police department.

Emergency Services and other road authorities within or adjacent to Bruce County are provided with emergency contact information in a separate document. Bruce County has a 24/7 call service which relays emergency messages to a hierarchy of staff.

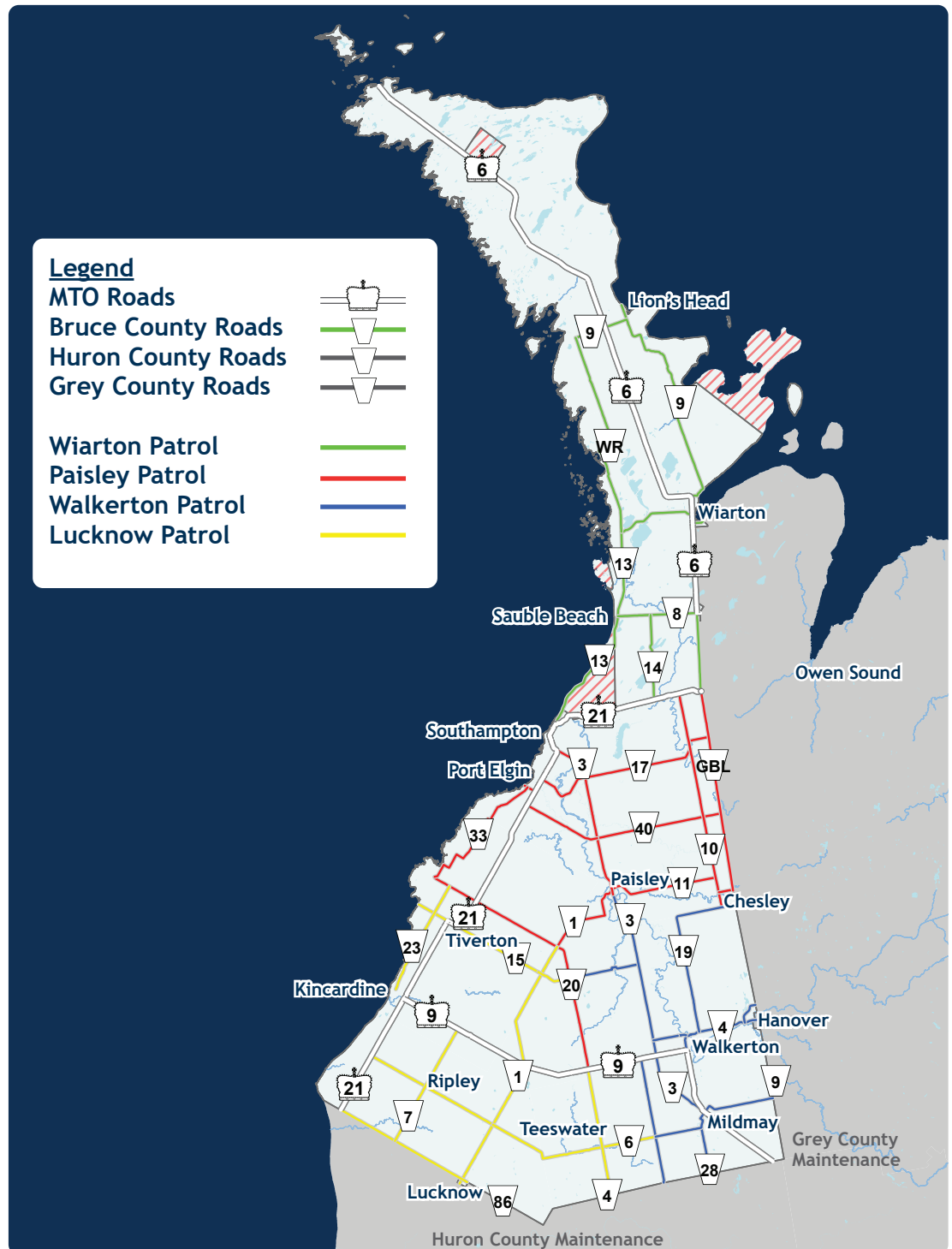


Winter Maintenance Staffing And Patrolling

The Bruce County Transportation and Environmental Services Department has four road maintenance divisions. These four divisions are Lucknow, Walkerton, Paisley and Wiarton. The maintenance divisions are tasked with maintaining the roads within their set geographic boundary. The Operations Staff have a set weekly schedule. This is comprised of a mix of permanent unionized staff and seasonally contracted staff. Where appropriate the use of contractors is also utilized. Operators are required to comply with the Commercial Vehicle Operator Registration requirements in regard to driving time and rest hours which influences the winter control.

For road related emergencies, the department is required to respond to emergencies when requested by emergency services. The department has an after-hours call service which relays emergency messages to a hierarchy of staff.

Patrolling for the winter season will commence when weather warrants as determined by the Operations Manager and/or the Director of Transportation & Environmental Services (T&ES) in coordination with the Forepersons. The cancellation of the winter patrols in the spring will be discussed and decided upon by the Operations Manager and/or Director of T&ES in coordination with the Forepersons.

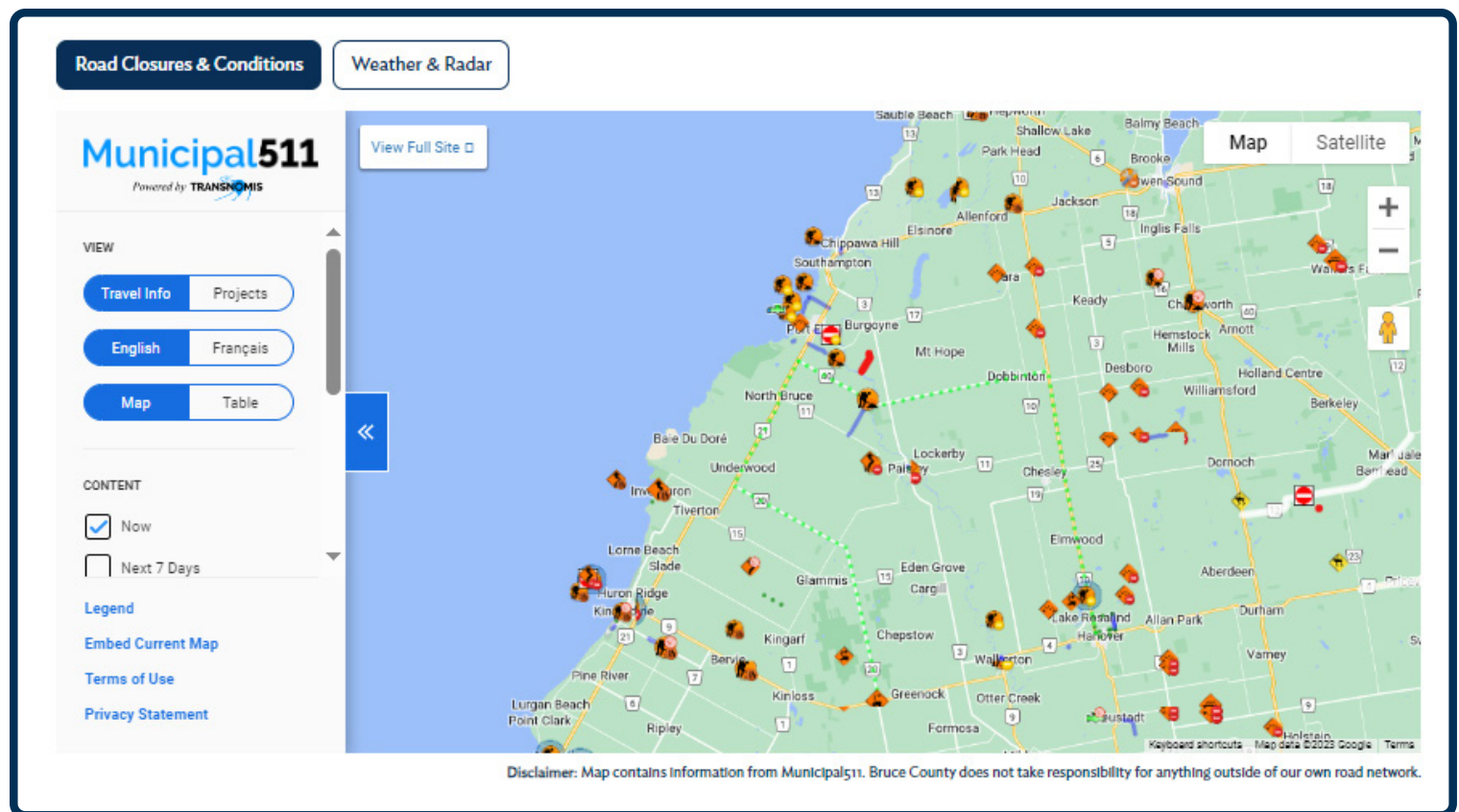


Road Report Updates

During the winter season, a patrol system is set up in each of the County's four patrol areas. The "Patrol" personnel are responsible for updating the road conditions on a regular basis.

The County's website and Road Conditions Hotline (1-866-266-7569) will be updated with the most recent road condition data for the four patrol areas at predetermined intervals and as the weather warrants seven days a week.

- Road Conditions Hotline: 1-866-266-7569
- www.brucecounty.on.ca/road-conditions



Level Of Service Policy

The Bruce County Transportation & Environmental Services Policy - Winter Maintenance - Level of Service was adopted on October 18, 2018.

The objective of this Policy is to establish a desirable Level of Service for Winter Maintenance on Bruce County Roads. The County recognizes Ontario Regulation 239/02 (and the recent May 2018 amendments) made under the Municipal Act entitled “Minimum Maintenance Standards for Municipal Highways”. This Standard focuses on the activity threshold and on the response time for winter maintenance activities.

There are three significant additions in the regulation that will impact winter maintenance levels of service for Bruce County:

- **Significant Weather Event.** A municipality can declare a significant weather event when a weather hazard is approaching or occurring and has the potential to pose a significant danger to users of the highways within the municipality. This declaration suspends the standard for winter maintenance according to Regulation 239/02 until the municipality declares the significant weather event has ended.
- **Sidewalks.** Snow accumulation and ice formation standard. All sidewalks on county roads and bridges are usually maintained by a lower tier municipality that connects to the sidewalk.
- **Bicycle lanes.** Snow accumulation standard for lanes that are a portion of the roadway designated for the preferential or exclusive use of cyclists. The County roads currently do not have this type of bicycle lane.

The County recognizes a higher level of maintenance for snow accumulation on Class 2 and 3 roads. This higher level of maintenance consists of an objective to reach a “center bare” surface condition. This additional standard will not be applied during a significant weather event. For the purpose of winter maintenance, Bruce County roads are considered classified as described on the attached map entitled ‘Road Classification’.

General Statement:

The County will not be able to maintain the roads in the same condition as in the summer, and traffic will be expected to reduce speed to suit the weather and road conditions.

The Level of Service for Winter Maintenance on County Roads has a major impact on the economy and quality of life for County residents. The objective of the Bruce County Transportation & Environmental Services Department will be to provide the best winter maintenance given the resources available for winter control purposes and given the weather conditions. It is understood that budgets for winter maintenance activities are based on average weather conditions and that the actual expenditures may be higher or lower than budgeted. It is also understood that the quality of winter maintenance on any road is dependent on the following factors: temperature, sunlight, wind, snow fall, freezing rain, topography, road surface, traffic volumes, and staff, materials, and equipment. There may be times when winter maintenance activities may be hindered due to these factors.

Significant Weather Event Criteria:

Bruce County may declare a significant weather event when the weather forecast or actual weather condition includes the following conditions:

- Significant snow accumulation during a 24-hour period,
- Ice formation that occurs with no warning from the weather forecast,
- High winds leading to large snow drifts,
- Cold temperature when de-icing operations will not be effective.

Significant Weather Event Start & End Declarations:

Bruce County may declare a significant weather event start or end in one or more of the following ways;

1. By posting a notice on the municipality's website.
2. By making an announcement on a social media platform, such as Facebook or Twitter.
3. By sending a press release or similar communication to internet, newspaper, radio or television media.
4. By notification through the municipality's police service.
5. By any other notification method required in a by-law of the municipality. O. Reg. 366/18, s. 15

Surface Condition Objective:

Given the limitations stated above, the surface condition objective on Bruce County Roads is based on the following:

Level of Service	Surface Condition	Description of Roads/Sidewalks
Center Bare	Attempt to attain bare 2.5 m center section of pavement within 24 hours after the end of the storm.	Class 2 & 3 Roads
Snow Packed	Attempt to attain snow packed condition within 24 hours after the end of the storm	Class 4 and Above Roads
Sidewalks	As per lower tier municipality standard	Class 4 and Above Roads

Snow Accumulation Roadways and Significant Weather Event:

The County recognizes Ontario Regulation 239/02 and amendment O. Reg. 366/18 and shall conform to the requirements of Section 4 and 5.

Snow Accumulation on Roadways

- the standard for addressing snow accumulation on roadways is,
 - (a) after becoming aware of the fact that the snow accumulation on a roadway is greater than the depth set out in the Table to this section, to deploy resources as soon as practicable to address the snow accumulation; and
 - (b) after the snow accumulation has ended, to address the snow accumulation so as to reduce the snow to a depth less than or equal to the depth set out in the Table within the time set out in the Table,
 - (i) to provide a minimum lane width of the lesser of three metres for each lane or the actual lane width, or
 - (ii) on a Class 4 or Class 5 highway with two lanes, to provide a total width of at least five metres
- addressing snow accumulation on a roadway includes,
 - (a) plowing the roadway;
 - (b) salting the roadway;
 - (c) applying abrasive materials to the roadway;
 - (d) applying other chemical or organic agents to the roadway;
 - (e) any combination of the methods described in clauses (a) to (d).
- This section does not apply to that portion of the roadway,
 - (a) designated for parking;
 - (b) consisting of a bicycle lane or other bicycle facility; or
 - (c) used by a municipality for snow storage.

Table - Snow Accumulation - Roadways

Class of Highway or Adjacent Highway	Depth	Time
1	2.5 cm	4 hours
2	5 cm	6 hours
3	8 cm	12 hours
4	8 cm	16 hours
5	10 cm	24 hours

O. Reg. 47/13, s. 4; O. Reg. 366/18, s. 5 (5).

Snow Accumulation on Roadways During a Significant Weather Event

If a municipality declares a significant weather event relating to snow accumulation, the standard for addressing snow accumulation on roadways until the declaration of the end of the significant weather event is,

- (a) to monitor the weather; and
- (b) if deemed practicable by the municipality, to deploy resources to address snow accumulation on roadways, starting from the time that the municipality deems appropriate to do so.

Following the end of the weather hazard in respect of which a significant weather event was declared by a municipality, the municipality shall,

- (a) declare the end of the significant weather event when the municipality determines it is appropriate to do so; and
- (b) address snow accumulation on roadways in accordance.

Ice Formation on Roadways, Icy Roadways and Significant Weather Event

The County recognizes Ontario Regulation 239/02 and amendment O.Reg. 366/18 and shall conform to the requirements of Section 5 to 8.

Ice formation on roadways and icy roadways

- The standard for the prevention of ice formation on roadways is doing the following in the 24-hour period preceding an alleged formation of ice on a roadway:
 - a) Monitor the weather
 - b) Patrol Roadways
 - c) If the municipality determines, as a result of its activities under paragraph 1 or 2, that there is a substantial probability of ice forming on a roadway, treat the roadway, if practicable, to prevent ice formation within the time set out in Table 1 to this section, starting from the time that the municipality determines is the appropriate time to deploy resources for that purpose.
- If the municipality meets these standards and, despite such compliance, ice forms on a roadway, the roadway is deemed to be in a state of repair until the applicable time set out in Table 2 to this section expires after the municipality becomes aware of the fact that the roadway is icy.
- The standard for treating icy roadways is to treat the icy roadway within the time set out in Table 2 to this section, and an icy roadway is deemed to be in a state of repair until the applicable time set out in Table 2 to this section expires after the municipality becomes aware of the fact that a roadway is icy.
- For the purposes of this section, treating a roadway means applying material to the roadway, including but not limited to, salt, sand or any combination of salt and sand.

Table 1 - Ice Formation Prevention

Class of Highway	Time
1	6 hours
2	8 hours
3	16 hours
4	24 hours
5	24 hours

O. Reg. 366/18, s. 8.

Table 2 - Treatment of Icy Roadways

Class of Highway	Time
1	3 hours
2	4 hours
3	8 hours
4	12 hours
5	16 hours

O. Reg. 366/18, s. 8.

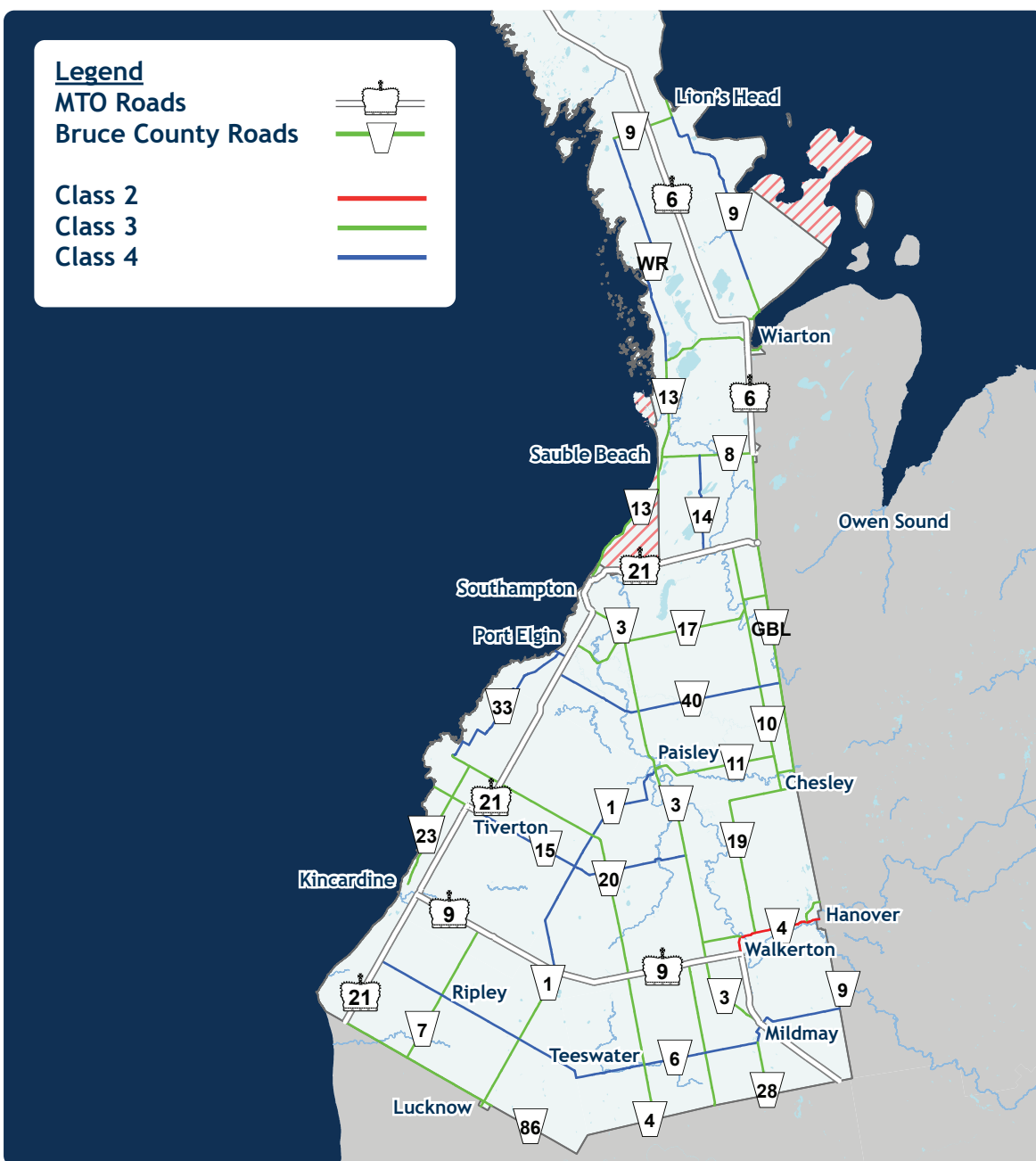
Icy Roadways, Significant Weather Event

If a municipality declares a significant weather event relating to ice, the standard for treating icy roadways until the declaration of the end of the significant weather event is,

- (a) to monitor the weather
- (b) if deemed practicable by the municipality, to deploy resources to treat icy roadways, starting from the time that the municipality deems appropriate to do so.

Following the end of the weather hazard in respect of which a significant weather event was declared by a municipality the municipality shall,

- (a) declare the end of the significant weather event when the municipality determines it is appropriate to do so; and
- (b) treat icy roadways in accordance with. ⁶



Ceasing Winter Maintenance Operations

The Transportation and Environmental Services Department acknowledges that there may be storm events, which create situations where continuing operations would be hazardous to the public and/or our employees. During these situations, the Department may exercise the following procedure to notify the public and specific authorities concerning the withdrawal of County winter maintenance equipment.

Ceasing operations shall be a decision of a Foreperson or the Patroller based on conditions within the patrol. The Patroller or the on-duty Foreperson shall contact adjacent patrols to determine the situation in their respective patrol. A decision will then be made if one patrol or several patrols shall be ceasing operations.

Once a decision to cease operations is made, the OPP shall be contacted.

If the Paisley Patrol ceases operations in Saugeen Shores, the Saugeen Shores Police Department will be notified.

Once a decision is made to cease operations or to resume operations, it will be communicated through the County's website and social media platforms.

For Bruce County Roads that are directly linked to Bruce Power such as Bruce Road 23 ('B' Line), Bruce Road 15, Bruce Road 33 (Lake Range Road) and Bruce Road 20 west of Highway 21, the Bruce Power Duty Security Staff will be contacted.



Closing Roads Due To Inclement Winter Conditions

The Bruce County Transportation and Environmental Services Department wishes to recognize that a procedure exists entitled “Ceasing Winter Maintenance Operations” which clearly identifies the procedure when limited visibility necessitates our forces to cease winter maintenance operations. The intent of this road closure procedure is to acknowledge that, in certain circumstances, the Department may be unable to keep a road open due to the existence of snow accumulation, accidents, visibility, etc. In these circumstances it may be necessary for the Department to consider officially having the road closed. It is acknowledged that an official road closure requires the authorization of the Ontario Provincial Police under Section 134 of the Highway Traffic Act (R.S.O. 1990).

Proposing to close a section of road shall be a decision of a Foreperson or Patroller based on specific conditions on the affected section of road. To request that a specific section of road be closed, a Foreperson or Patroller shall contact the OPP.

If the requested road to be closed is in Saugeen Shores, the Saugeen Shores Police Department will be contacted.

Please note that Bruce County has a limited amount of road closure sign inventory and therefore have typical locations for placement. Typical placement of barricades is at MTO highways and the next Bruce County Road and or at a Bruce County Road to the next Bruce County Road or urban center. However, if the police require a barricade at an alternate location, Bruce County will make an effort to install the signage where requested. We have confirmed with the OPP and Saugeen Shores Police Department that a request from the Department via the phone would be acceptable. Upon receipt of authorization, signs shall be placed at each end of the identified section of road in accordance with the attached H.T.A. Regulation 599. The appropriate police authority (OPP Comm Centre and/or Saugeen Shores Police Dept) will then be contacted by the Foreperson/Patroller to confirm that the signs are erected. **The O.P.P./Saugeen Shores Police Department will then consider the “Road Closed” and shall contact the Ambulance, Fire Dispatch, and Radio Stations.** The County’s website and the Road Conditions Hotline will be updated accordingly.

Please note that in most instances, the OPP and/or Saugeen Shores Police Department will contact Bruce County to close an area road prior to Bruce County requesting of the police authority to have a road closed. In that instance, the OPP/Saugeen Shores Police Department must provide the Patroller/Foreperson with the specific limits of the requested road closure. This call will be deemed authorization to place the signs at each end of the identified section of road in accordance with the attached H.T.A. Regulation 599. The O.P.P./Saugeen Shores Police Department shall then be contacted by the Patroller to confirm that the signs are erected. **The O.P.P./Saugeen Shores Police Department will then consider the “Road Closed” and shall contact the Ambulance, Fire Dispatch, and Radio Stations.** The County’s website and the Road Conditions Hotline will be updated accordingly.

For Bruce County Roads that are directly linked to Bruce Power such as Bruce Road 23 (‘B’ Line), Bruce Road 15, Bruce Road 33 (Lake Range Road) and Bruce Road 20 west of Highway 21, the Bruce Power Duty Security Staff will be contacted.

Proposing to open a section of road shall be a decision of a Foreperson or Patroller and requires the authorization of the OPP or Saugeen Shores Police Dept. A Foreperson or Patroller shall contact the OPP/Saugeen Shores Police Department and request authorization for the affected section of road to be opened. Upon receipt of this road opening authorization, the ‘Road Closed’ signs shall be removed. The Foreperson or Patroller will contact the OPP/Saugeen Shores Police Department to confirm that the signs have been removed.

Once a decision is made to re-open a section of road, the OPP / Saugeen Shores Police Department shall contact the Ambulance, Fire Dispatch and Radio Stations. The County’s website and the Road Conditions Hotline will be updated accordingly.

For Bruce County Roads that are directly linked to Bruce Power such as Bruce Road 23 (‘B’ Line), Bruce Road 15, Bruce Road 33 (Lake Range Road) and Bruce Road 20 west of Highway 21, the Bruce Power Duty Security Staff will be contacted.

Bruce County’s Transportation & Environmental Services department will place road closure signage in accordance with the Highway Traffic Act.

Examples of Road Closed Signage Layouts



Operator's Hours During Winter Maintenance

The amended Ontario Regulation 555/06 of the Highway Traffic Act, O. Reg. 888/21 provides restrictions on the number of hours a driver is permitted to operate a vehicle. The Department shall monitor any changes to the regulation and make the appropriate updates to this policy.

With respect to the amended 'Hours of Work' O. Reg 555/06, the Department wishes to safeguard the County's drivers and the public by establishing the following guidelines during winter maintenance operations:

1. In conformance with Section 4. (1), the Department (operator) wishes to confirm that midnight is the hour at which the driver's day starts.
2. A driver shall report to the Foreperson or Patroller after 12 hours of continuous "on duty" activity and inform him if he feels competent/comfortable to continue operations.
3. In conformance with Section 12. (1), the Department (operator) wishes to confirm that each driver shall follow cycle 1.
4. The Department (operator) wishes to confirm that we operate within exemption noted in Section 23. (1) A driver is not required to keep a record of duty status for a day if the driver, (a) on the operator's instructions, drives a commercial motor vehicle solely within a radius of 160 kilometres of the location at which the driver starts the day; and (b) returns at the end of the day to the same location from which they started. O. Reg. 715/21, s. 11 (1).
5. In conformance with Section 3. (1) subject to subsection (3), a driver and operator are exempt from this Regulation while the driver is driving a commercial motor vehicle of a type and in the circumstances described in any of the following paragraphs: 4.1 - 'A vehicle operated by or on behalf of a municipality, road authority or public utility while responding to a situation or impending situation that constitutes an imminent danger, though not one of major proportions, to life, property or the environment, whether caused by forces of nature, an accident, an intentional act or otherwise'. The determination of such a situation will be confirmed by the Director of T&ES, Operations Manager, or any of the four Patrol Foreperson. It will be the objective of the Department to have drivers take 'off duty time' when the Department has completed the response to the situation.

The T&ES Department adheres to Ontario Regulation 555/06 'Hours of Service' of the Highway Traffic Act. The following are important facts within the 'Hours of Service' regulation for reference. For a complete copy of the Regulation, please refer to www.e-laws.gov.on.ca or contact the T&ES Department.



Winter Maintenance Agreements

There are a number of situations where it is efficient for the Department to work with local municipalities and bordering counties to undertake winter maintenance work on each other's behalf.

The following is a list of exchanges of work, supported by a Winter Maintenance Agreement, all of which have no funds being exchanged:

1. Saugeen Bluffs Road:

The County provides winter maintenance on Saugeen Bluffs Road off Bruce Road 3.

2. Saugeen S/R 13/14:

The County provides winter maintenance on Saugeen S/R 13/14 off County Road 40 (formerly 4th of Saugeen).

3. Bruce Road 25:

The Town of Saugeen Shores will monitor roadside ditches for obstructions/flooding.

4. Grey Road 4, Town of Hanover:

The County patrols, plows, and sands into Hanover to the 5th Avenue intersection on behalf of Grey County.

5. Bruce Road 4 at the Huron/Bruce Boundary:

Huron County will undertake winter maintenance on Huron/Bruce County Road 4 from the end of the southerly curve (approx. 1485m west of ROW between Lots 15 and 16 Culross Twsp.) to the beginning of the northerly curve (approx. 406m west of ROW between Lots 15 and 16 Culross Twsp.) (approx. 1.1km)

6. Bruce County/Huron County 86:

a) Bruce County maintains from Washington Street in the Village of Lucknow to the east limits of Highway 21 (approx. 19 km).

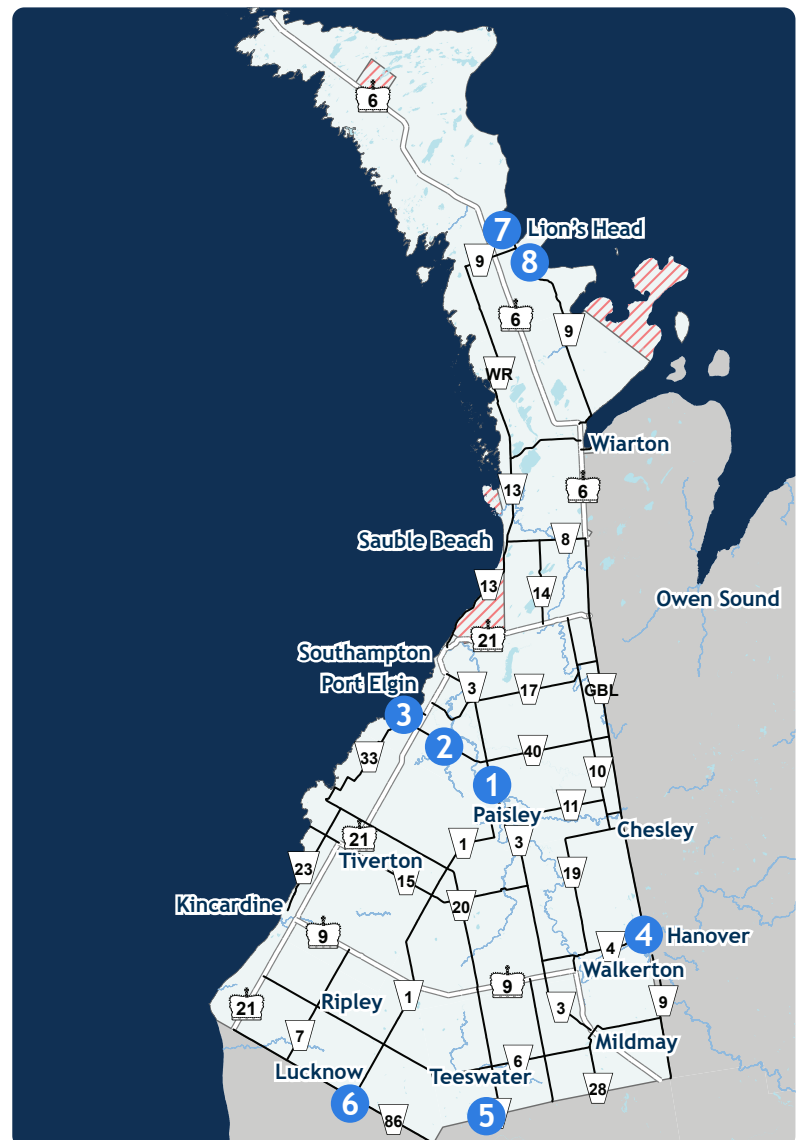
b) Huron County maintains from Washington Street in the Village of Lucknow to Huron-Bruce boundary (approx. 11.4 km).

7. Bruce Road 9 (Main Street Lion's Head):

The Municipality of Northern Bruce Peninsula will undertake winter maintenance on Bruce Road 9 (Main Street, Lion's Head) from the intersection of Bruce Road 9 (Ferndale Road) northerly to Everatt Side Road. Early morning only.

8. Moore Street Lion's Head:

The County provides winter maintenance on Moore Street, Lion's Head from Main Street easterly to Grey Bruce Health Services on behalf of the Municipality of Northern Bruce Peninsula. Late afternoon to early evening only.



Notice Of Violation

In accordance with THE HIGHWAY TRAFFIC ACT

To: _____

Address: _____

Pursuant to the Highway Traffic Act, R.S.O. 1990, c. H. 8, s. 181, no person shall deposit snow or ice on a roadway without permission in writing so to do from the Ministry or the road authority responsible for the maintenance of the road.

ALSO

Take notice that Bruce County has By-Law 2017-033 (C.2) in place which states: - *“No person shall place snow or ice on a County Highway in such a manner so as to obstruct or encumber the use of said highway”*.

Please contact the Department for further information regarding this by-law.
The depositing of snow on County Road No. _____ is prohibited by this by-law. Upon conviction of an offence, a fine not less than \$50.00 and not more than \$300.00 may be levied.

In addition, if snow placed on a road should cause an accident, the person responsible may become liable for the damages sustained by his/her actions.

This is a WARNING only. A charge will be laid upon the next occurrence.

Date: _____

Per: _____

Bruce County Transportation and Environmental Services

* Example of a warning notice that would be given to the property owner in violation*

Notice Of Parking Violation Warning

You are hereby advised that this vehicle interferes with the plowing of snow and must be kept off the roadway. In order to efficiently plow the roads and to keep the snow pushed back, everyone must comply with the provisions of the Highway Traffic Act, RSO 1990 c. H8 sec.170, (12-15).

Vehicles interfering with traffic

(12) Despite the other provisions of this section, no person shall park or stand a vehicle on a highway in such a manner as to interfere with the movement of traffic or the clearing of snow from the highway. R.S.O. 1990, c. H.8, s. 170 (12).

Application of subs. (12), where by-law in force

(13) The provisions of subsection (12) with respect to parking or standing in such a manner as to interfere with the movement of traffic or with the clearing of snow from the highway do not apply to a portion of a highway in respect of which a municipal by-law prohibiting or regulating parking or standing in such a manner as to interfere with traffic or with the clearing of snow from the highway, as the case may be, is in force. R.S.O. 1990, c. H.8, s. 170 (13).

Penalty

(14) Every person who contravenes this section is guilty of an offence and on conviction is liable to a fine of not less than \$20 and not more than \$100. R.S.O. 1990, c. H.8, s. 170 (14).

Powers of officer to remove vehicle

(15) A police officer, police cadet, municipal law enforcement officer or an officer appointed for carrying out the provisions of this Act, upon discovery of any vehicle parked or standing in contravention of subsection (12), of a regulation made under subsection 26 (3) of the Public Transportation and Highway Improvement Act or of a municipal by-law, may cause it to be moved or taken to and placed or stored in a suitable place and all costs and charges for the removal, care and storage of the vehicle, if any, are a lien upon the vehicle, which may be enforced in the manner provided by the Repair and Storage Liens Act. 2005, c. 26, Sched. A, s. 28 (2).

This vehicle has been reported to the Bruce County Transportation and Environmental Services Department. If a second violation occurs, the County shall act accordingly to remedy the situation.

Your co-operation in this matter is appreciated.

Make and Model: _____ Vehicle License No. _____

Date: _____

Per: _____

Bruce County Transportation and Environmental Services

* Example of a warning notice that would be given to the vehicle operator*

Snow Plowing Policies - Letter

October 5, 2023

Attention: Municipal Public Works Managers
Re: Snow Plowing Policies

As I am sure is the case in your Municipality, winter preparations for the 2023/24 season are well underway here at Bruce County. The County's Transportation & Environmental Services team endeavors to provide the highest quality of winter maintenance services to our transportation network.

It is not lost on the County that our road networks connect the many communities within your Municipality and intersect your local road networks. In order to deliver the highest quality service possible to our region we must work with our Municipal colleagues in a cooperative and positive manner.

For your reference, I have enclosed the County's policies on:

- Snow Plowing Policy in Urban Areas (Adopted December 6, 2001)
- Snow Plowing Policy at intersections (Adopted December 6, 2001)

There are a couple areas of emphasis that the County is seeking focused cooperation from our Municipal partners. Particularly with the snowbanks that build up over the course of the winter season and impede the visibility of "Stop" and "Stop Ahead" signs, under the County's jurisdiction. We are requesting your assistance with ensuring that these signs always remain visible for an approach distance of 150 meters. We ask that your patrol operations include the task of checking for visibility on these signs to ensure public safety is maintained.

The County's patrol does not provide coverage beyond the County's Road allowance; therefore, visibility of these signs could be compromised without our knowledge.

The County is grateful to have strong partnerships with every one of the public works departments within our region. Without these partnerships, we would not be able to perform our operations in a cost-effective and timely manner.

Should your patrol operations notice an area that has compromised visibility, please contact our patrol foreperson so that we may mutually resolve the issue. Please do not hesitate to contact the undersigned if you have questions or concerns regarding this letter.

Wishing you and your staff a smooth and safe winter season.

Yours truly,



Adam Stanley
Director, Transportation and Environmental Services

Encls.

- cc. Bill Hayes, Bruce County - Operations Manager
Robert Mouillieratt, Bruce County - Walkerton Patrol Foreperson
Steve Cobean, Bruce County - Paisley Patrol Foreperson
Greg Andress, Bruce County - Lucknow Patrol Foreperson
Chris Owens, Bruce County - Wiarton Patrol Foreperson

Snow Plowing Policy In Urban Areas

The Bruce County Transportation & Environmental Services Snow Plowing Policy In Urban Areas was adopted on December 6, 2001.

Background

This policy is based on the County policy entitled ‘Construction and Maintenance Policy on County Roads in Urban Areas’ which was created in 1980, amended in 1983 and revised in 1993. This policy is clear that it is the County’s responsibility to plow and sand the through lanes in urban areas, yet the policy is somewhat unclear in regard to the County’s responsibility for plowing the parking lanes in urban areas. The Policy is clear that snow removal on sidewalks is the obligation of the local municipality. The County’s actions should conform to the following Policy statement:

Policy Statement

The Bruce County Transportation & Environmental Services Department plows, sands and salts the through lanes and when they are able to, in the early morning, they may partially clean off the parking lane.

Additional Information

The wording of this activity was prepared to ensure that parking lanes were only partially cleaned off since the plow wing was unable to clean off the entire parking lane while the one-way plow was riding centerline. The phrase was permissive in the sense that if cars or other obstructions were present in the parking lane that it is not an obligation of the Department to have the vehicle or obstruction removed to enable the partial cleaning. Furthermore, the wording reflected an attempt to partially clean the parking lane in the early morning to avoid the hours of children’s activities and to enable the partial parking lane clearing to be done prior to general entrance snow blowing.

The Department feels that this continued approach to cleaning parking lanes in urban areas is appropriate since the local municipality is of the understanding that complete parking lane cleaning is their obligation and, in many cases, requires the removal of snow by a loader and trucking.



Snow Plowing Policy At Intersections

The Bruce County Transportation & Environmental Services Snow Plowing Policy At Intersections was adopted on December 6, 2001.

Background

The Department has received inquiries concerning the clearing of snow from intersections with roads under the jurisdiction of the local municipality. In the spring of 2001, the Department reviewed their present activities at these intersections.

Policy Statement

The Bruce County Transportation & Environmental Services Department's winter maintenance activities at intersections will be based on the following three categories:

1. Intersections Where The County Road Is The Through Road:

At most intersections, the County Road is the through road and the intersecting road is the stop condition. During winter storm events the Department shall not clear these intersections. Consequently, the responsibility for intersection clearing at these locations shall be that of the jurisdiction of the intersecting road. Following the storm, when the County is undertaking high winging or pushing back banks in the vicinity of these intersections, the County shall clean up the intersection if its activities had deposited snow in these intersections.

2. Intersections Where The County Road Is The Stop Condition:

There are several intersections where the County Road is regulated by a stop sign and the intersecting road is the through road. There are also many County Road/County Road intersections where one County Road is regulated by a stop sign. At these locations, it would be the County's responsibility to ensure that the intersection is not encumbered by its operations.

3. Intersections With Signals:

If the intersection is regulated with a traffic signal, it would be the County's responsibility to ensure that the intersection is not encumbered by its operations.

Additional Information

The wording of this activity was prepared to ensure that local municipalities would undertake the intersection clearing in conjunction with their operations of clearing the adjacent municipal road. This work generally is accomplished with their turning and returning down the side road. Furthermore, it is the County's desire to spend their time and effort on maintaining the through roads as opposed to cleaning intersections. It is also worthwhile noting that most intersections are controlled by stop signs such that a vehicle at speed does not encounter any snow left by the County plow wing. The County is prepared to undertake intersection cleaning when done in conjunction with spot winging or high winging. In these instances, the County undertakes the intersection cleaning since the municipality would generally be unaware of the County's high winging work and would generally not be able to respond.

Ad Hoc Service Providers

Scope of Policy

This Policy does not apply to Contractors performing snow blowing operations under a signed Contract.

Limitations on the Use of Ad Hoc Service Providers - Emergencies Only

The services of an Ad Hoc Service Provider shall only be engaged in the event of an ‘emergency situation’ whereby the County of Bruce Transportation and Environmental Services Department (T&ES) is unable to engage the services of a contractor via a signed contract in a timely manner. Determining if circumstances amount to an ‘emergency situation’ shall be at the sole discretion of the T&ES Operations Manager and/or Director of T&ES.

Background

The County of Bruce may, with the approval of its insurer, extend its General Liability coverage to include any parties including private individuals as additional insureds while carrying out County of Bruce approved operations, including snow clearing. The County will supply a certificate of insurance evidencing this coverage is in place.

As an Ad-Hoc Service Provider does not operate under a standard contract with the County of Bruce, the County does not require them to provide business insurance to cover this type of activity. However, any parties providing such operations should still maintain appropriate insurance covering their own operations as they normally would, including where it is mandatory to operate such vehicles or equipment on public access roadways. Other optional coverages may include for damages to their own property, vehicles and equipment, accident benefits (medical coverage) for anyone operating vehicles or equipment, as well as for public liabilities for third party damages or injuries. It is strongly recommended that you inform your broker/insurer of the snow clearing work you are performing for the County of Bruce to ensure any coverage you have available will extend accordingly. The insurance coverage maintained by the County of Bruce will be in excess to any coverage maintained by you and only for liability from the performance of County-directed operations. The County does not cover for damages to your vehicles or equipment or injuries to operators or for public property damage or injuries if caused by your own negligence. The County also does not cover for damages or injuries suffered by other parties through the use of a vehicle or equipment that must be insured to be operated on public access roadways.

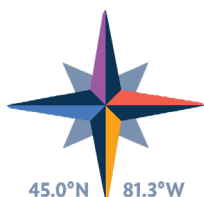
In addition to any records kept by the County of Bruce, private individuals while operating their equipment for the County shall also keep a record of their activities i.e., location of work (roadway section), hours of work, date of work, nature of work. Anyone operating their equipment on County of Bruce approved activities shall receive direction/instructions from a County of Bruce employee prior to undertaking any activities. Private individuals operating their equipment on County of Bruce approved activities shall always work under the direct supervision of a County of Bruce employee.

A copy of the Certificate of Insurance shall be provided to the Ad Hoc Service Provider.

Annual Re-Confirmation of Ad Hoc Service Providers

Prior to the start of the Winter Maintenance season, T&ES shall:

- (a) Confirm Name or Business Name (if operating as a ‘business’), mailing address and patrol area of the Ad Hoc Service Provider(s).*
- (b) Receive an acknowledgement in writing by Ad Hoc Service Provider of the insurance arrangement.*
- (c) Provide the above information to the Insurance & Risk Specialist.*



45.0°N 81.3°W

BRUCE
county

For more information please contact:

Bruce County Transportation & Environmental Services
519-881-1291
transportationinfo@brucecounty.on.ca

www.brucecounty.on.ca

© 2023 County of Bruce. All rights reserved. No part of this publication may be reproduced in any form or by any means without the written permission of the County of Bruce.