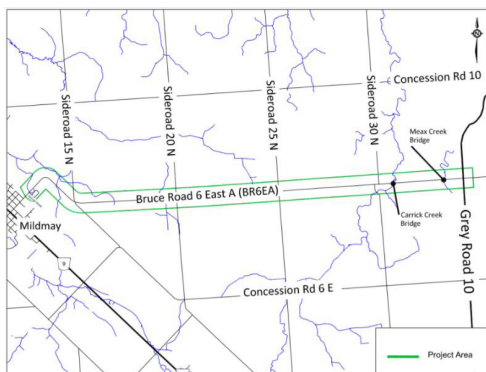


Notice of Public Information Centre No. 1

Bruce Road 6 East A Rehabilitation Environmental Assessment Study and Detail Design

Introduction

The County of Bruce has retained BT Engineering Inc. to undertake an Environmental Assessment (EA) Study and Detail Design for the rehabilitation of Bruce Road 6 East A (BR6EA). The project extends from George Street in Mildmay to Grey Road 10 and includes two bridges. The study has investigated the roadway design and is recommending a preferred plan to address the traffic needs within the project area. Improvements to BR6EA are required to address safety concerns associated with the vertical and horizontal curves and to rehabilitate the existing pavement structure, culverts, and bridges.



In addition, the Municipality of South Bruce will be reconstructing the south side of Sideroad 20 N to tie into the improvements on BR6EA. The Municipality's improvements will be completed as a Schedule A+ Class Environmental Assessment.

The works are planned to occur in two phases subject to the availability of funding and priorities of Council. Phase 1 of construction is proposed from Mildmay to Deemerton (George Street to east of Sideroad 20 N) and includes reconstruction of Sideroad 20. Phase 2 of construction will extend from east of Sideroad 20 to Grey Road 10. Phase 1 is tentatively scheduled for construction in 2022/2023 and Phase 2 is tentatively scheduled for construction in 2026/2027.

Study Process

This Study is being completed as a Municipal Schedule A+ Class Environmental Assessment for Phases 1 and 2 of the project. The Study will meet the requirements of the Municipal Class Environmental Assessment (2015). The project will determine the design and staging for the road rehabilitation, and will consider the effects on the natural, social, and cultural environments.

Public Consultation

The County wishes to ensure that anyone interested in this study has the opportunity to be involved and provide input. At the present time, the Province of Ontario has implemented restrictions on public gatherings as a result of the COVID-19 pandemic. As a result, this Public Information Centre is relying on web-based communications. The online PIC will include a series of exhibits that present background information, the evaluation of alternatives and the Technically Preferred Alternative for improvements. Comments on the information presented can be provided by contacting the County or consultant project managers' email addresses listed below.

The PIC will be held for a two-week period, with a "live" virtual Zoom meeting on November 24, 2021. **To register for the Zoom meeting, please contact Steve Taylor or Jim Donohoe.** The Online Public Information Centre is scheduled for:

PIC Date: November 22, 2021 to December 6, 2021

Virtual Zoom Meeting Date: November 24, 2021 from 6:30 to 8:00 PM

Website: www.brucecounty.on.ca/bruce-road-6-east

There is an opportunity at any time during the Class EA process for interested persons to provide comments. Early identification of individual and group concerns greatly aids in addressing these concerns. All information will be collected in accordance with the *Freedom of Information and Protection of Privacy Act (2009)*. With the exception of personal information, all comments will become part of the public record. Persons will be advised of future communication opportunities by newspaper public notice, email notice, and posting on the County website.

For more information or if you wish to be placed on the study's email mailing list, contact either:

Steve Taylor, P.Eng.
EA Project Manager
BT Engineering Inc.
509 Talbot Street
London, ON N6A 2S5
Tel: 519-672-2222
Email: stevenj.taylor@bteng.ca

Jim Donohoe
Engineering Manager
Bruce County
30 Park Street
Walkerton, ON N0G 2V0
Tel: 519-881-2400
Email: JDonohoe@brucecounty.on.ca

