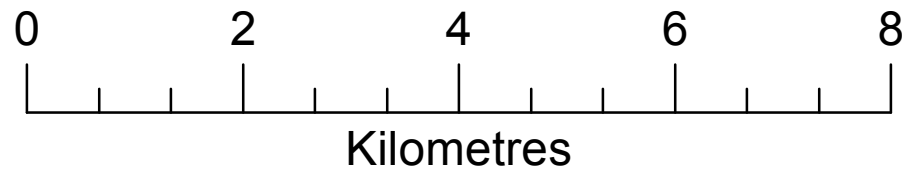
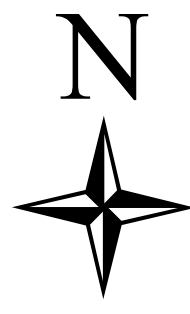


County of Bruce Schedule 'A' : Land Use

(South Section - Interior)

Scale 1:70,000



Legend

- Official Plan Amendment
- Special Policy Area
- Primary Urban Communities
- Secondary Urban Communities
- Hamlet Communities
- Licenced Aggregate / Quarry Operation
- Hazard Land (See Note Below)
- Agricultural
- Estate Residential Development
- Inland Lake Development
- Major Open Space
- Rural
- Rural Recreational
- Travel Trailer Park & Commercial Campground Development

Notes:

This schedule must be read in conjunction with the policies of the official plan and schedules 'B', 'C' AND 'C-2'

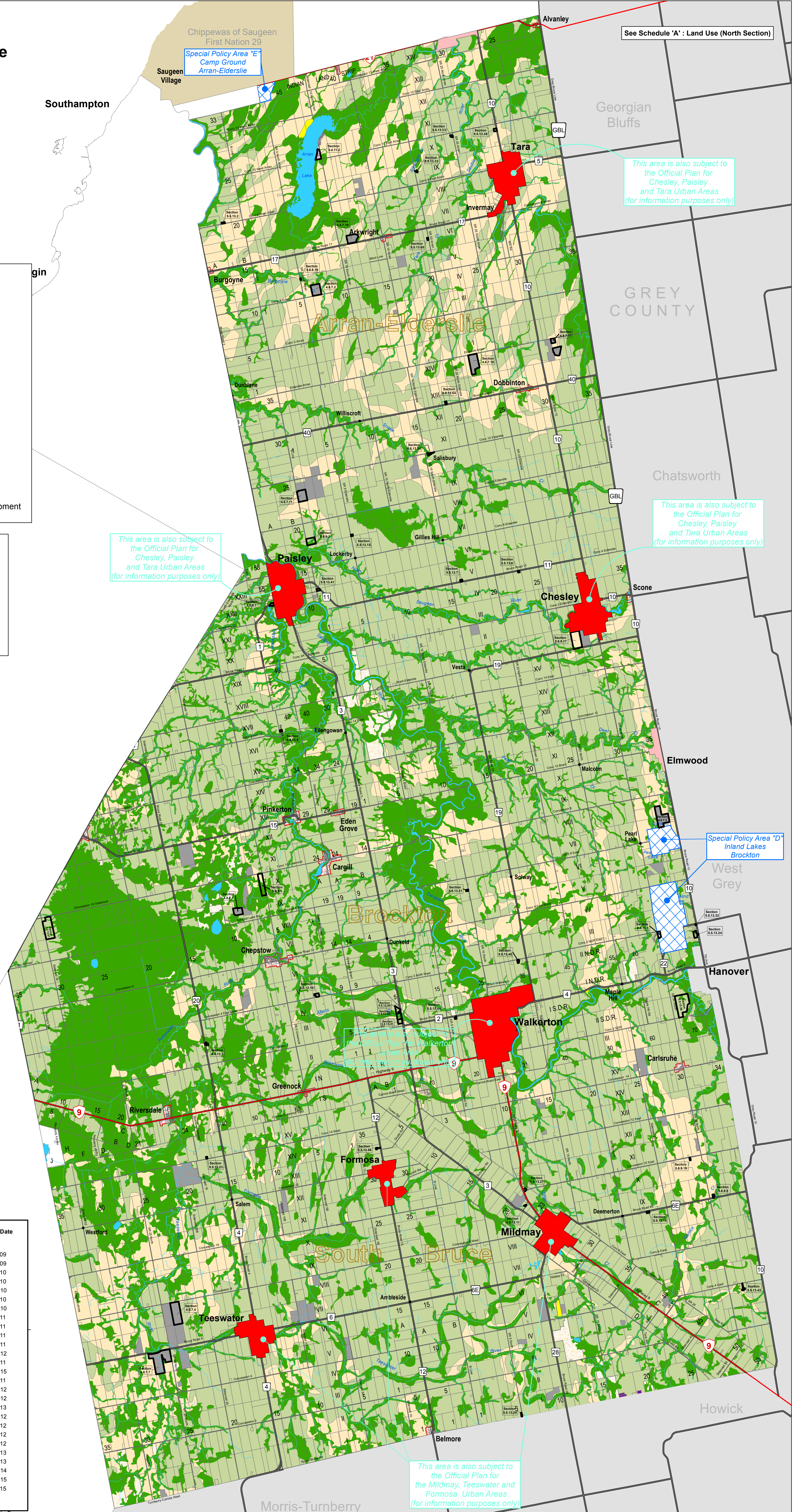
Hazard land areas are comprised of lands, as established by the conservation authorities and the Ministry of Natural Resources.

Reference should be made to local official plans for the location and extent of hazard land areas within primary and / or secondary urban communities.

Produced by the County of Bruce with data supplied under licence by members of the Ontario Geospatial Data Exchange
© 2015 County of Bruce

Notes:
Every effort has been made to ensure the accuracy of this map. However, since changes can occur frequently, the County of Bruce cannot be responsible for any variations from the printed information.
Unauthorized reproduction or recording of maps, text or any other material from this publication, by photocopying, by electronic storage and retrieval, or by any other means is prohibited without written permission of the County of Bruce.
For a copy of this or other maps, contact:
County of Bruce
Planning and Economic Development
Box 129, 578 Brown St.
Warton, ON N0H 2T0
Telephone: (519) 534-2092
Fax: (519) 534-1174
E-mail: pe@brucecountycan.ca
DATE PRINTED: July 9, 2015
Map Projection: Universal Transverse Mercator (Zone 17)
North American Datum 1983

OPA	Adopted Date / By-law	Approved Date	Consolidation Date
116	Brace County April 2, 2009 / By-law 4470	June 21, 2010	June, 2012
124	June 4, 2009 / By-law 4483	July 2, 2009	July, 2009
126	September 3, 2009 / By-law 4501	October 2, 2009	September, 2009
129	January 7, 2010 / By-law 2010-002	February 3, 2010	February, 2010
133	March 4, 2010 / By-law 2010-019	April 5, 2010	May, 2010
134	March 4, 2010 / By-law 2010-020	April 5, 2010	April, 2010
135	April 1, 2010 / By-law 2010-025	April 28, 2010	May, 2010
136	July 8, 2010 / By-law 2010-033	August 4, 2010	August, 2010
142	January 6, 2011 / By-law 2011-002	February 7, 2011	February, 2011
143	April 7, 2011 / By-law 2011-021	May 2, 2011	May, 2011
146	June 2, 2011 / By-law 2011-033	July 6, 2011	September, 2011
147	May 5, 2011 / By-law 2011-028	June 2, 2011	October, 2011
149	September 1, 2011 / By-law 2011-045	September 28, 2011	April, 2012
152	September 1, 2011 / By-law 2011-046	September 28, 2011	October, 2011
151	November 3, 2011 / By-law 2011-057	December 5, 2011	June, 2015
153	September 1, 2011 / By-law 2011-047	September 28, 2011	November, 2011
159	May 3, 2012 / By-law 2012-018	May 30, 2012	June, 2012
162	May 3, 2012 / By-law 2012-020	May 30, 2012	June, 2012
164	September 5, 2013 / By-law 2013-037	October 2, 2013	October, 2013
166	July 5, 2012 / By-law 2012-039	August 1, 2013	August, 2012
168	September 6, 2012 / By-law 2012-045	October 3, 2012	October, 2012
169	September 6, 2012 / By-law 2012-046	October 3, 2012	October, 2012
170	November 1, 2012 / By-law 2012-055	November 27, 2012	December, 2012
176	September 5, 2013 / By-law 2013-036	September 30, 2013	October, 2013
178	November 7, 2013 / By-law 2013-047	February 26, 2013	December, 2013
181	March 6, 2014 / By-law 2014-013	April 1, 2014	April, 2014
191	February 5, 2015 / By-law 2015-006	February 26, 2015	April, 2015
194	June 4, 2015 / By-law 2015-021	June 30, 2015	July, 2015



See Schedule 'A' : Land Use (North Section)

This area is also subject to the Official Plan for Chesley, Paisley and Tara Urban Areas (for information purposes only)

This area is also subject to the Official Plan for Chesley, Paisley and Tara Urban Areas (for information purposes only)

This area is also subject to the Official Plan for Chesley, Paisley and Tara Urban Areas (for information purposes only)

Special Policy Area "D" Inland Lakes Brockton

This area is also subject to the Official Plan for Walkerton (for information purposes only)

This area is also subject to the Official Plan for the Mildmay, Teeswater and Formosa Urban Areas (for information purposes only)