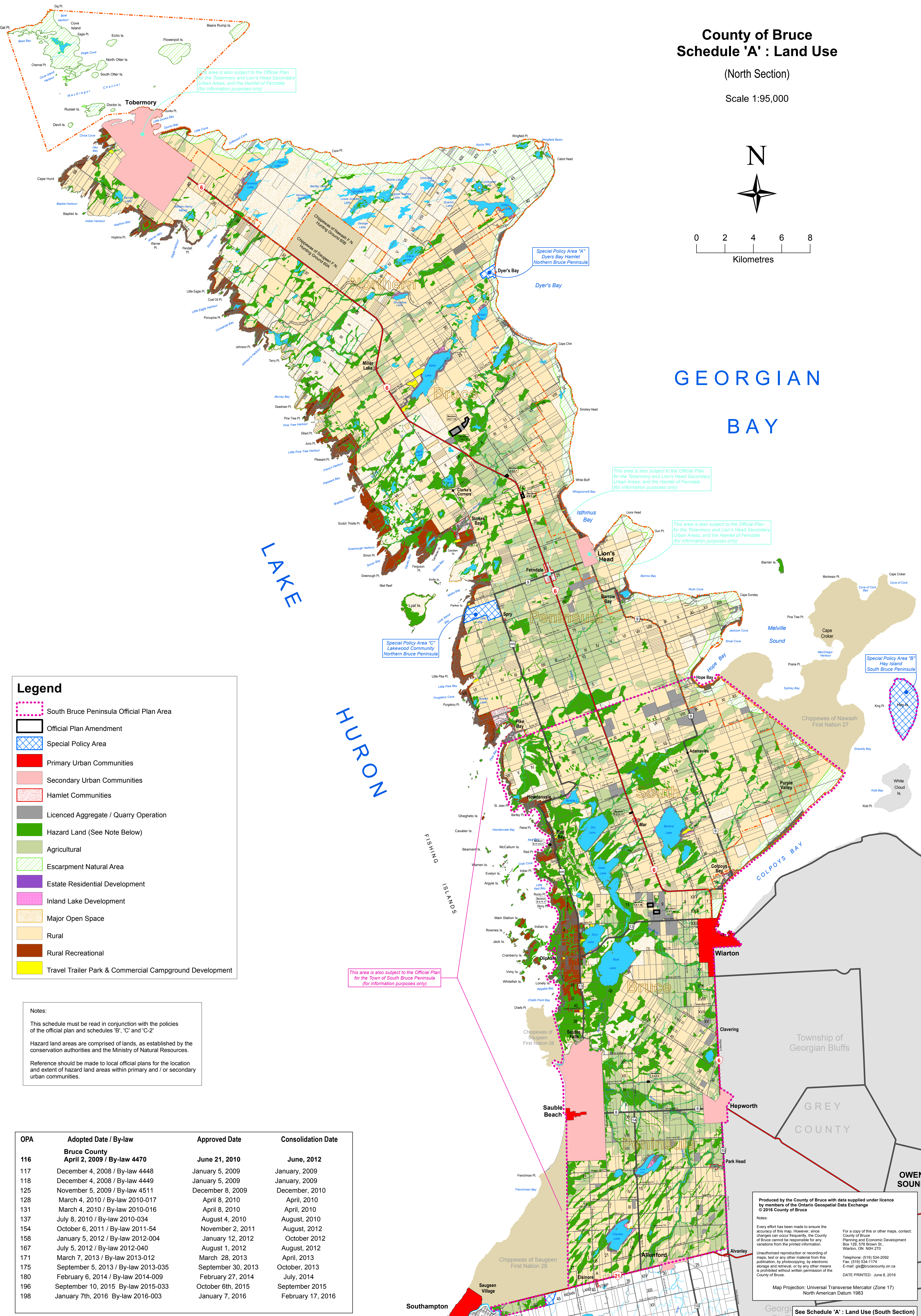
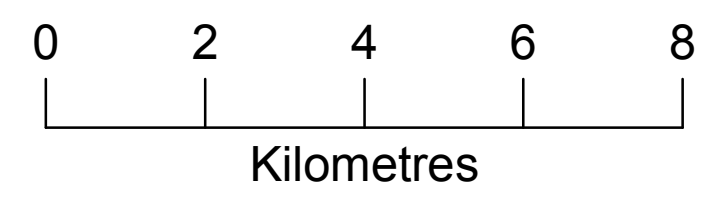
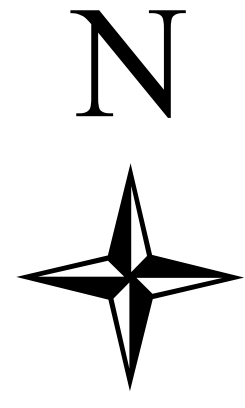


County of Bruce Schedule 'A' : Land Use

(North Section)

Scale 1:95,000



Legend

- South Bruce Peninsula Official Plan Area
- Official Plan Amendment
- Special Policy Area
- Primary Urban Communities
- Secondary Urban Communities
- Hamlet Communities
- Licenced Aggregate / Quarry Operation
- Hazard Land (See Note Below)
- Agricultural
- Escarpment Natural Area
- Estate Residential Development
- Inland Lake Development
- Major Open Space
- Rural
- Rural Recreational
- Travel Trailer Park & Commercial Campground Development

Notes:
This schedule must be read in conjunction with the policies of the official plan and schedules 'B', 'C' and 'C-2'.
Hazard land areas are comprised of lands, as established by the conservation authorities and the Ministry of Natural Resources.
Reference should be made to local official plans for the location and extent of hazard land areas within primary and / or secondary urban communities.

OPA	Adopted Date / By-law	Approved Date	Consolidation Date
116	Bruce County April 2, 2009 / By-law 4470	June 21, 2010	June, 2012
117	December 4, 2008 / By-law 4448	January 5, 2009	January, 2009
118	December 4, 2008 / By-law 4449	January 5, 2009	January, 2009
125	November 5, 2009 / By-law 4511	December 8, 2009	December, 2010
128	March 4, 2010 / By-law 2010-017	April 8, 2010	April, 2010
131	March 4, 2010 / By-law 2010-016	April 8, 2010	April, 2010
137	July 8, 2010 / By-law 2010-034	August 4, 2010	August, 2010
154	October 6, 2011 / By-law 2011-54	November 2, 2011	August, 2012
158	January 5, 2012 / By-law 2012-004	January 12, 2012	October 2012
167	July 5, 2012 / By-law 2012-040	August 1, 2012	August, 2012
171	March 7, 2013 / By-law 2013-012	March 28, 2013	April, 2013
175	September 5, 2013 / By-law 2013-035	September 30, 2013	October, 2013
180	February 6, 2014 / By-law 2014-009	February 27, 2014	July, 2014
196	September 10, 2015 / By-law 2015-033	October 6th, 2015	September 2015
198	January 7th, 2016 / By-law 2016-003	January 7, 2016	February 17, 2016

Produced by the County of Bruce with data supplied under licence by members of the Ontario Geospatial Data Exchange © 2016 County of Bruce

Notes:
Every effort has been made to ensure the accuracy of this map. However, since changes can occur frequently, the County of Bruce cannot be responsible for any variations from the printed information.
Unauthorized reproduction or recording of maps, text or any other material from this publication, by photocopying, by electronic storage and retrieval, or by any other means is prohibited without written permission of the County of Bruce.
DATE PRINTED: June 8, 2016

For a copy of this or other maps, contact:
County of Bruce
Planning and Economic Development
Box 129, 578 Brown St.,
Warton, ON N0H 2T0
Telephone: (519) 534-2092
Fax: (519) 534-1174
E-mail: gis@brucecounty.on.ca

Map Projection: Universal Transverse Mercator (Zone 17)
North American Datum 1983

See Schedule 'A' : Land Use (South Section)