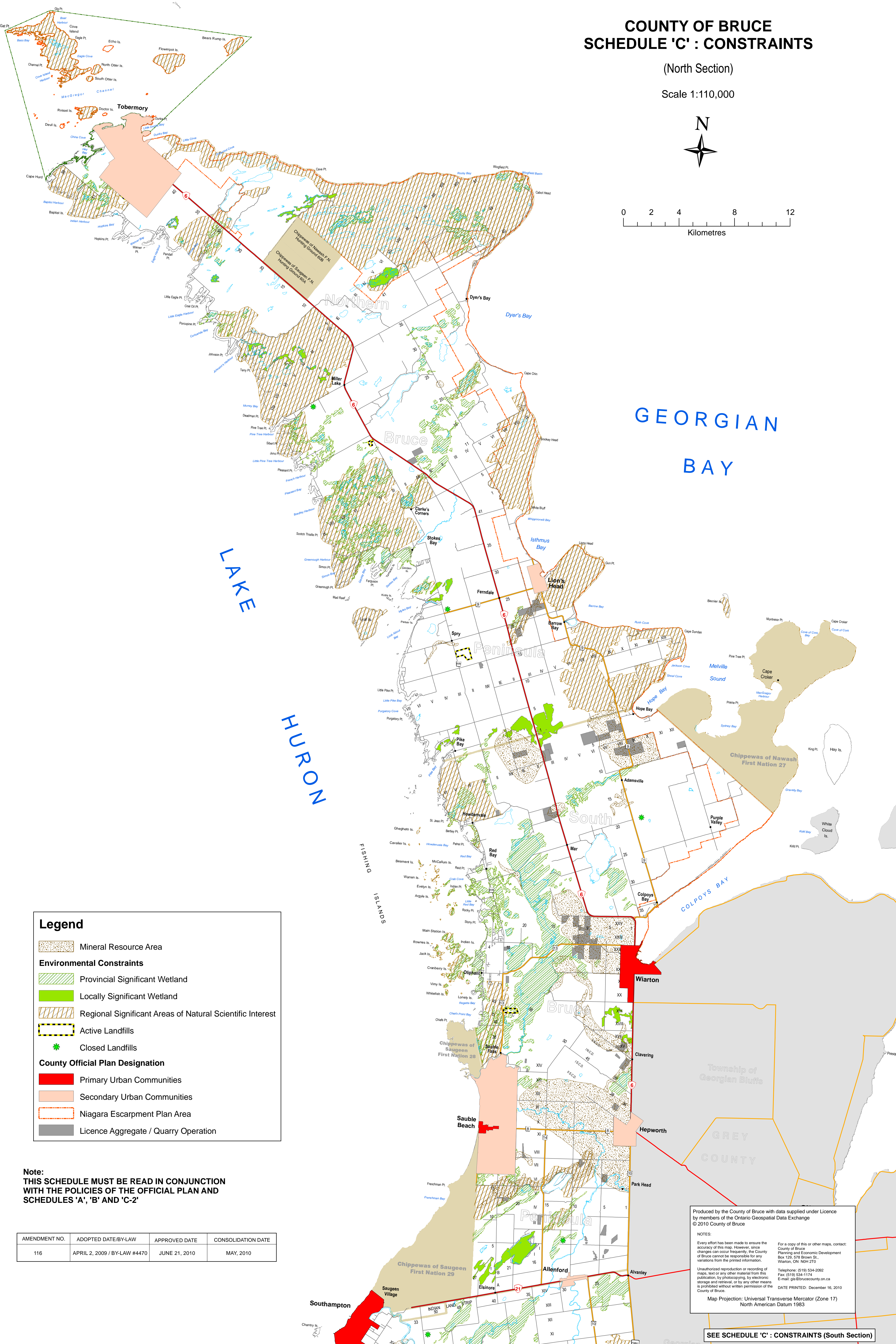
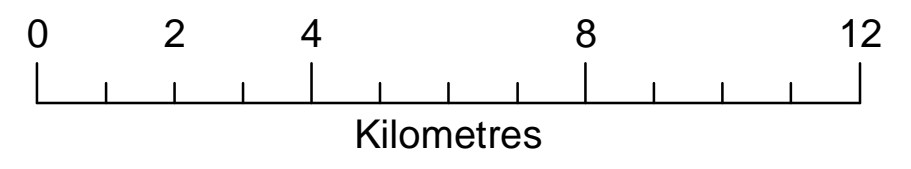
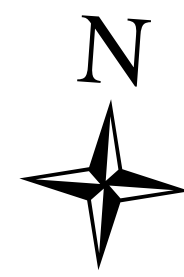


COUNTY OF BRUCE SCHEDULE 'C' : CONSTRAINTS

(North Section)

Scale 1:110,000



Legend

- Mineral Resource Area
- Environmental Constraints**
- Provincial Significant Wetland
- Locally Significant Wetland
- Regional Significant Areas of Natural Scientific Interest
- Active Landfills
- Closed Landfills
- County Official Plan Designation**
- Primary Urban Communities
- Secondary Urban Communities
- Niagara Escarpment Plan Area
- Licence Aggregate / Quarry Operation

Note:
THIS SCHEDULE MUST BE READ IN CONJUNCTION
WITH THE POLICIES OF THE OFFICIAL PLAN AND
SCHEDULES 'A', 'B' AND 'C-2'

AMENDMENT NO.	ADOPTED DATE/BY-LAW	APPROVED DATE	CONSOLIDATION DATE
116	APRIL 2, 2009 / BY-LAW #4470	JUNE 21, 2010	MAY, 2010

Produced by the County of Bruce with data supplied under Licence by members of the Ontario Geospatial Data Exchange © 2010 County of Bruce

NOTES:
Every effort has been made to ensure the accuracy of this map. However, since changes can occur frequently, the County of Bruce cannot be responsible for any variations from the printed information.

Unauthorized reproduction or recording of maps, text or any other material from this publication, by photocopying, by electronic storage and retrieval, or by any other means is prohibited without written permission of the County of Bruce.

For a copy of this or other maps, contact:
County of Bruce
Planning and Economic Development
Box 129, 578 Brown St.,
Windsor, ON N6H 2T0

Telephone: (519) 534-2092
Fax: (519) 534-1174
E-mail: gis@brucecounty.on.ca

DATE PRINTED: December 16, 2010

Map Projection: Universal Transverse Mercator (Zone 17)
North American Datum 1983

SEE SCHEDULE 'C' : CONSTRAINTS (South Section)